

E-Z™ Vibrator Mount Kits

Mount kits include mount bracket, fasteners and safety cable. Standard brackets are fabricated from cold-rolled carbon steel.

H-Mount

The “H” is the standard weld-on mount for bins and hoppers. All units are available in stainless steel and aluminum as well as standard cold-rolled steel.

Stand-Off High Temp & Adaptor Brackets

These brackets were developed with two applications in mind:

- **Retrofit new vibrators** to existing mounts without having to weld.
- **High temperature applications** where the vibrators must be located away from the heat source.

Martin® Glue Mount™ System

Can't weld on a bracket? Try the glue mount. Try the unique MARTIN® GLUE-MOUNT™ System. Special brackets are designed to be used with our high-performance, two-component adhesive. Simply clean the surface, apply the glue to the bracket, and hold in place for 10 minutes. The bracket will be ready for use in 24 hours. This mount is best used on flat surfaces with the MARTIN® PKL™ Interval Im-



E-Z™ Vibrator Mount Kits

MARTIN® NTS™ NON-IMPACTING LINEAR VIBRATORS

VIBRATOR	BRACKET
NTS 180	MB-6
NTS 250	MB-8
NTS 350	MB-12
NTS 50-75/01	MB-18
NTS 54/02	MB-30
NTS 50/04	MB-30
NTS 50/08	MB-36

MARTIN® NTP™ CONTINUOUS IMPACTING LINEAR VIBRATORS

VIBRATOR	BRACKET
NTP 18	MB-6
NTP 25	MB-12
NTP 32	MB-18
NTP 48	MB-24

MARTIN® PKL™ INTERVAL IMPACTORS

IMPACTOR	BRACKET
PKL 190	MB-6
PKL 450/740	MB-12
PKL 1000/2100/5000	MB-18

MARTIN® NCT™ TURBINE VIBRATORS

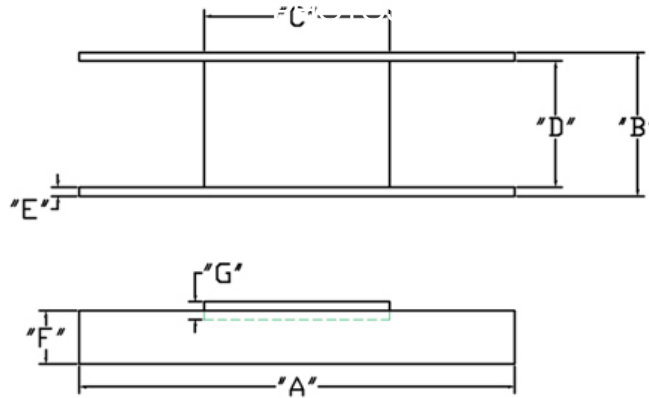
VIBRATOR	BRACKET
NCT 3/4/4i	MB-12
NCT 5/10/10i	MB-18
NCT 15/29/29i	MB-24
NCT 55/108/108i	MB-30
NCT 126/250/250i	MB-36

E-Z™ Vibrator Mount Kits

VIBRATOR MOUNT BRACKET DIMENSIONS

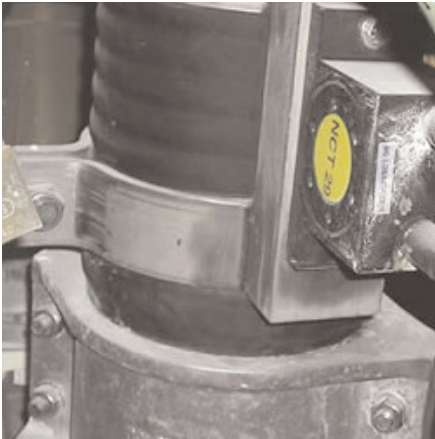
BRACKET	A	B	C	D	E	F	G
MB-6	6(152)	2.5(63.5)	6(152)	2.25(57.2)	0.13(3.18)	1.25(31.8)	0.13(3.18)
MB-8	8(203)	3(76.2)	3(76.2)	2.5(63.5)	0.25(6.35)	1.5(38.1)	0.25(6.35)
MB-12	12(305)	5.5(140)	6(152)	5(127)	0.25(6.35)	1.5(38.1)	0.25(6.35)
MB-18	18(457)	5.5(140)	6(152)	5(127)	0.25(6.35)	1.5(38.1)	0.38(9.65)
MB-24	24(610)	6(152)	6(152)	5(127)	0.25(6.35)	1.5(38.1)	0.38(9.65)
MB-30	30(762)	7(178)	7.5(191)	6.5(165)	0.25(6.35)	1.5(38.1)	0.38(9.65)
MB-36	36(914)	8.75(222)	11(279)	8(203)	0.38(9.65)	1.5(38.1)	0.5(12.7)

STANDARD "H" TYPE VIBRATOR MOUNT BRACKET



E-Z™ Vibrator Mount Kits

PHOTOS



Special brackets available for all applications.



Special mount used for electric vibrators on grizzly.



Two NCT 250 Turbine Vibrators mounted on large vessel.



PKL 135 Impactor mounted on cone.